

SEC.4. (1) (b) (iii) The procedure followed in the decision making process, including channels of supervision and accountability

Head Quarters:

All the Divisions/Sections/Cell at headquarter are headed by respective Division Head as per the Organisation Chart given below and called as HoD (Head of the Division) e.g. EP&QA Division is headed by Director (EP&QA), Laboratory Division is headed by Director (Laboratory) etc. All HoD's are responsible for completing the task of their Divisions/Sections/Cell. The Secretary, Textiles Committee is the Chief Executive Officer of the Textiles Committee. All important matters / files from various divisions are put-up to Competent Authority as per delegated powers.

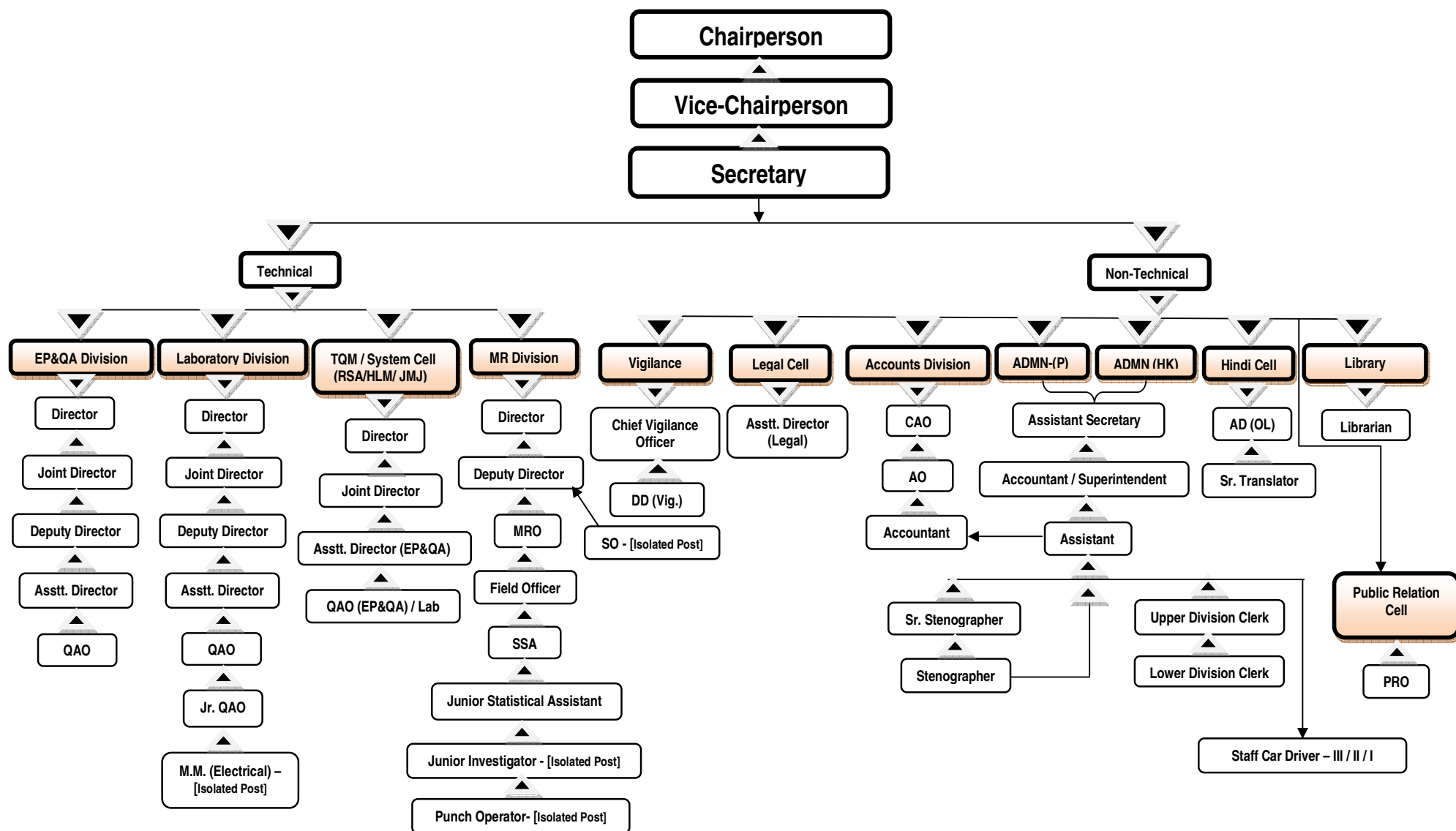
Regional Offices:

The Regional Office is headed by Officer-in-charge (OIC) either in the capacity of Joint Director/Deputy Director/Assistant Director or Quality Assurance Officer. All the OIC's of Regional Offices are responsible for completing day to day task of their respective Regional Offices.

Organizational Chart is as under:



ORGANISATION CHART OF TEXTILES COMMITTEE



Abbreviations used in the Organisation Chart:-

EP&QA - Export Promotion and Quality Appraisal
QAO - Quality Assurance Officer
Jr. QAO - Junior Quality Assurance Officer
TQM Division - Total Quality Management Division
PRO - Public Relation Officer

CAO - Chief Accounts Officer
AO - Accounts Officer
M.M. (Electrical) - Maintenance Mechanic (Electrical)
MR Division - Market Research Division
Punch Operator - [Isolated Post]

- Promotion Hierarchy

AD (OL) - Assistant Director (Official language)
DD (Vig.) - Deputy Director (Vigilance)
SO - Statistical Officer
MRO - Market Research Officer
SSA - Senior Statistical Assistant